

QYNAPSE

The future of neuroimaging is here



QYSCORE®

Artificial Intelligence for MRI analysis:
produces **rapid, precise and objective quantitative**
insights into **Central Nervous System (CNS)** disorders

QyScore® is a groundbreaking neuroimaging analysis software that supports the diagnosis and monitoring of CNS diseases

Indications:

- Alzheimer's Disease & Other Dementias (including Fronto-Temporal Dementia, Lewy Body Dementia, Vascular Dementia...)
- Multiple Sclerosis
- Parkinson's Disease & Other Movement Disorders



Volumetric Markers:

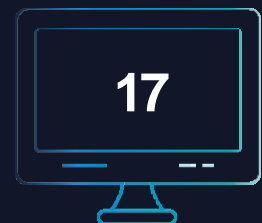
- Whole Brain
- Frontal, Temporal, Parietal and Occipital Cortical Lobes
- Hippocampus, Amygdala
- White Matter Hyperintensities
- Lateral Ventricles*
- Caudate Nucleus, Putamen, Globus Pallidus and Thalamus*
- Cerebellum & Brainstem*
- T1 Hypointensities*



More than **200 measures** for clinical trials & other research settings, including fMRI, diffusion MRI and PET analyses



QyScore®'s results are generated in comparison to a **large normative database** of **2000+ healthy subjects**



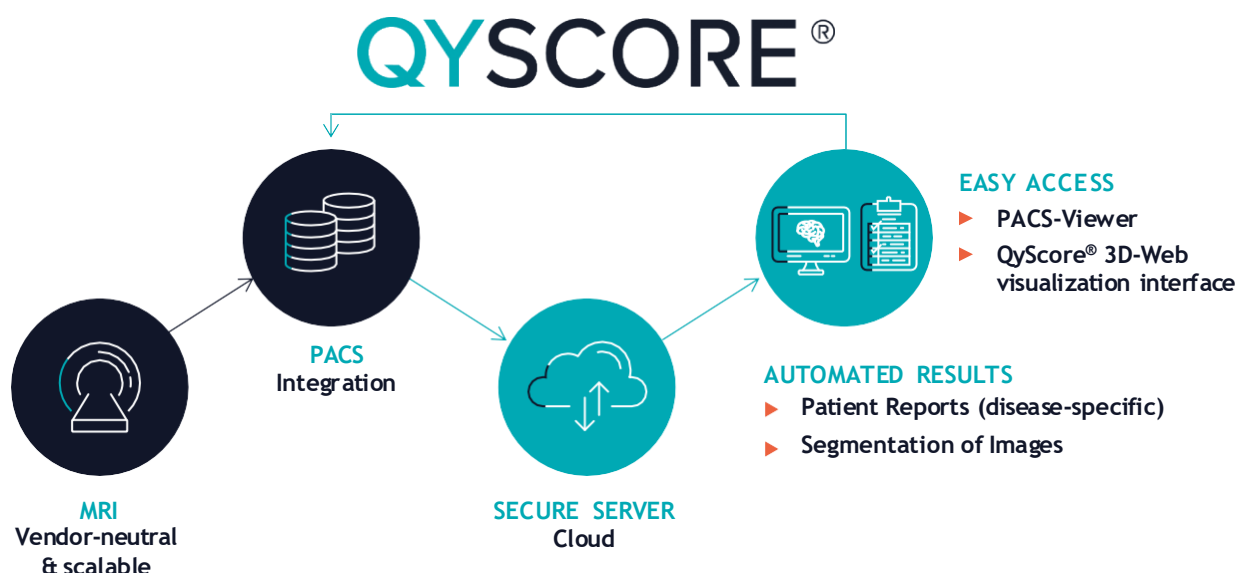
Robust¹ **algorithms** with **high reproducibility**², supported by **17 scientific publications**

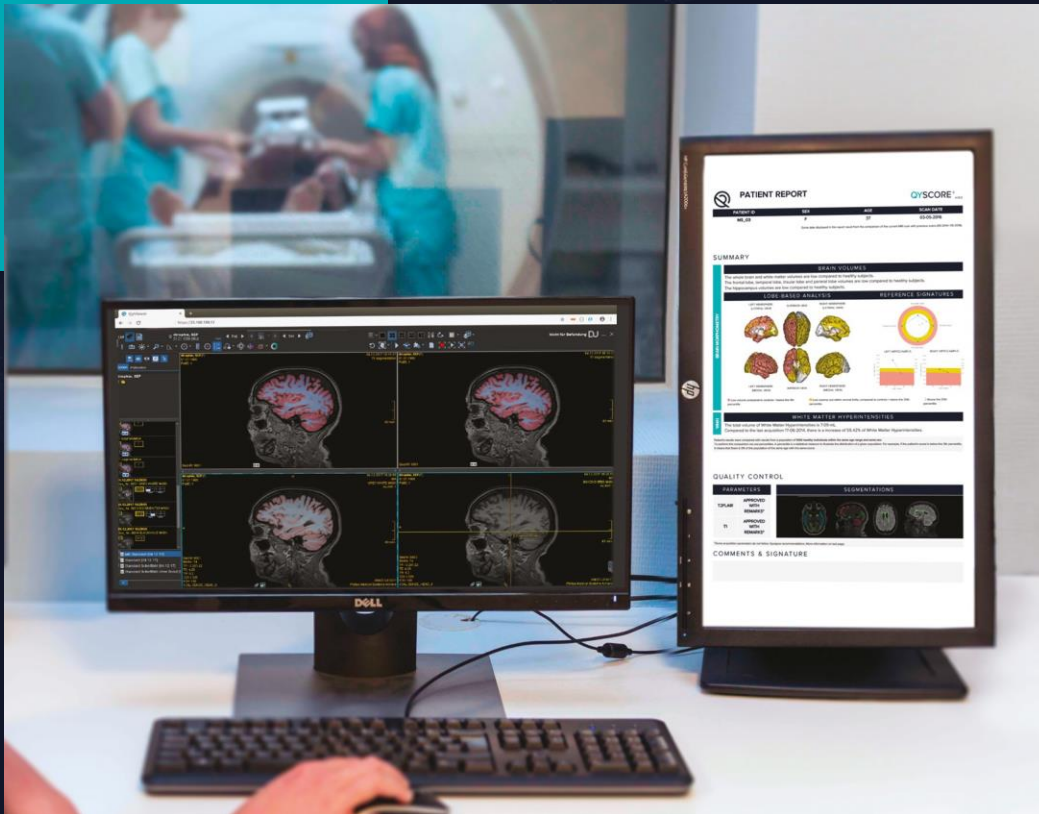
¹) Tran et al. NeuroImage Clinical 2022. ²) Morales-Pinzón A., Wallack M., Cavallari M., et al. (Poster ACTRIMS Forum 2022)

* Included in the next release

Seamless integration into Clinical workflows

Software delivered as a Service (SaaS) for global rollout





Interface and reports adapted to your needs

Scientifically Proven Performance

► Validated segmentation and measurements

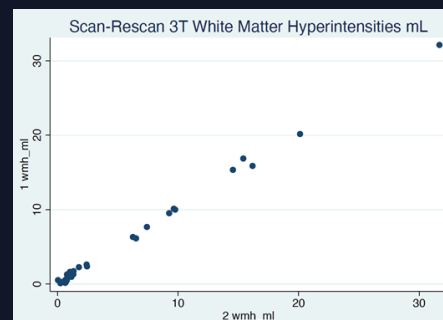
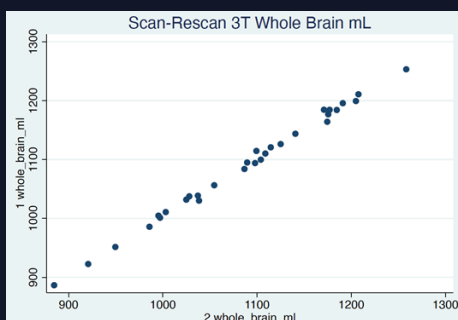
– in comparison to gold-standard manual methods

Results published in **European Radiology Journal (2022)**, scan the QR code to read Cavado E., et al. Eur Radiol 32, 2949–2961 (2022). <https://doi.org/10.1007/s00330-021-08385-9>



► High reproducibility

– consistent **scan-rescan** results for Brain Volumetric and White Matter Hyperintensities cross scanner and repeated timepoints



They choose QYNAPSE

“

In light of the recent breakthrough for Alzheimer's patients - the approval of new treatment options by the FDA. Qynapse's vision is becoming even more critical to advance the early detection of Alzheimer's disease and to precisely monitor the therapy efficacy and safety”

Bruno Dubois, MD, PhD

Professor of Neurology | Sorbonne University, Director of the Institute of Memory and Alzheimer's Disease (IM2A) | Pitié Salpêtrière Hospital, Paris

“

I'm excited to use Qyscore® to quantify both volumetric and white matter integrity in our patients - bringing such an important layer of precision and objectivity to inform our clinical decisions”

David Merrill, MD, PhD

Director | Pacific Brain Health Center Pacific Neuroscience Institute

Together is the only way forward towards a future of accurate diagnosis and treatment for CNS diseases.

QYNAPSE

www.qynapse.com

Indications for Use

Qyscore® is a medical device software, Qyscore is CE marked according to 2017/745 Regulation

Indications for Use in Europe (CE): Qyscore® is an advanced processing and visualization software for automatic labeling and volumetric quantification of segmented central nervous system structures for patients older than 18 years of age. The software is intended to be used by medical personnel or neuroimaging trained personnel to support diagnosis of central nervous system diseases.

Manufacturer

Qynapse - 2-10 rue d'Oradour-sur-Glane- 75015 PARIS – France - E-mail: contact@qynapse.com

Qynapse is ISO 13485 Certified, HIPAA Compliant, GDPR Compliant, and 21 C.F.R. Part 11 Compliant

© 2024 QYNAPSE ALL RIGHTS RESERVED.



Scan the QR code to access this brochure in PDF format